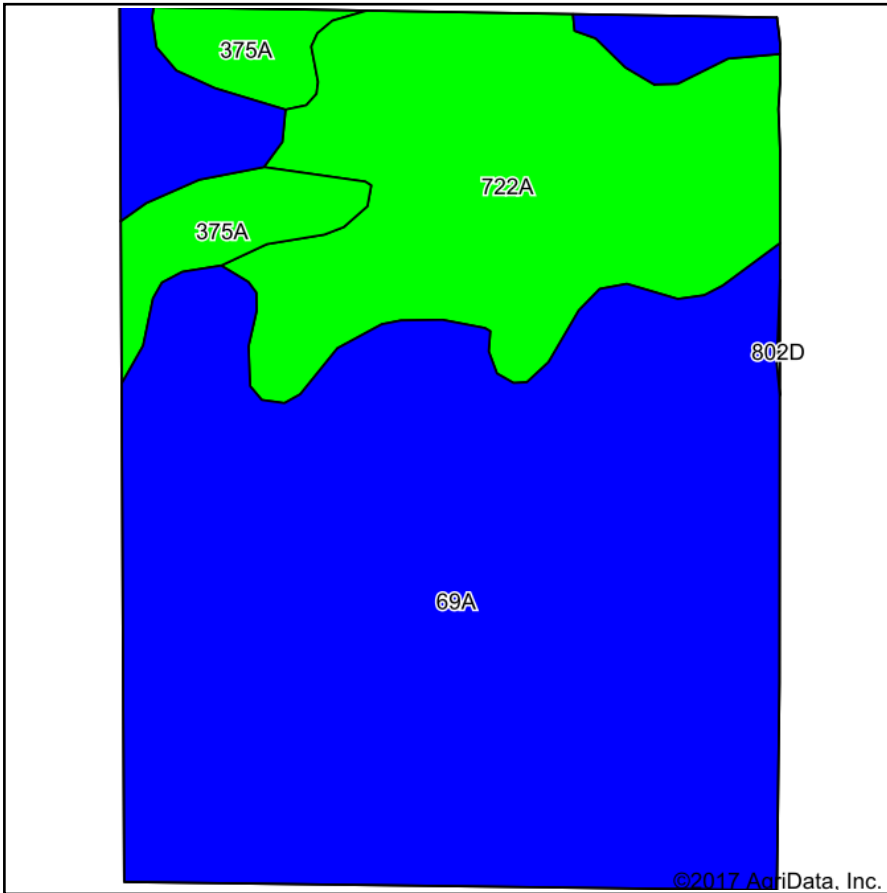
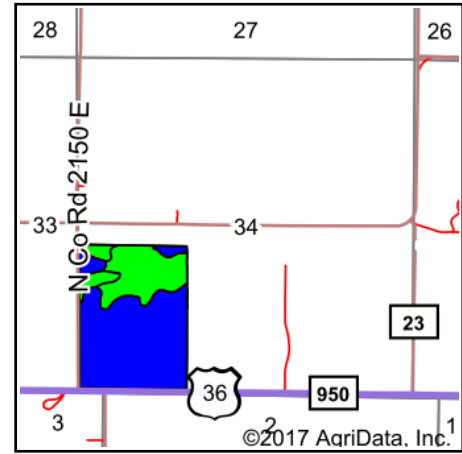


# Soils Map



Soils data provided by USDA and NRCS.



State: **Illinois**  
 County: **Douglas**  
 Location: **34-16N-10E**  
 Township: **Murdock**  
 Acres: **89.14**  
 Date: **1/6/2018**



Maps Provided By:



© AgriData, Inc. 2017

www.AgriDataInc.com



## Area Symbol: IL041, Soil Area Version: 15

Code	Soil Description	Acres	Percent of field	Il. State Productivity Index Legend	Corn Bu/A	Soybeans Bu/A	Crop productivity index for optimum management
69A	Milford silty clay loam, 0 to 2 percent slopes	62.06	69.6%		171	57	128
722A	Drummer-Milford silty clay loams, 0 to 2 percent slopes	21.84	24.5%		184	60	137
375A	Rutland silt loam, 0 to 2 percent slopes	5.24	5.9%		180	58	133
<b>Weighted Average</b>					<b>174.7</b>	<b>57.8</b>	<b>130.5</b>

**Table: Optimum Crop Productivity Ratings for Illinois Soil by K.R. Olson and J.M. Lang, Office of Research, ACES, University of Illinois at Champaign-Urbana.** Version: 1/2/2012 Amended Table S2 B811

Crop yields and productivity indices for optimum management (B811) are maintained at the following NRES web site:

<https://www.ideals.illinois.edu/handle/2142/1027/>

\*\* Indexes adjusted for slope and erosion according to Bulletin 811 Table S3

Soils data provided by USDA and NRCS. Soils data provided by University of Illinois at Champaign-Urbana.

\*c: Using Capabilities Class Dominant Condition Aggregation Method